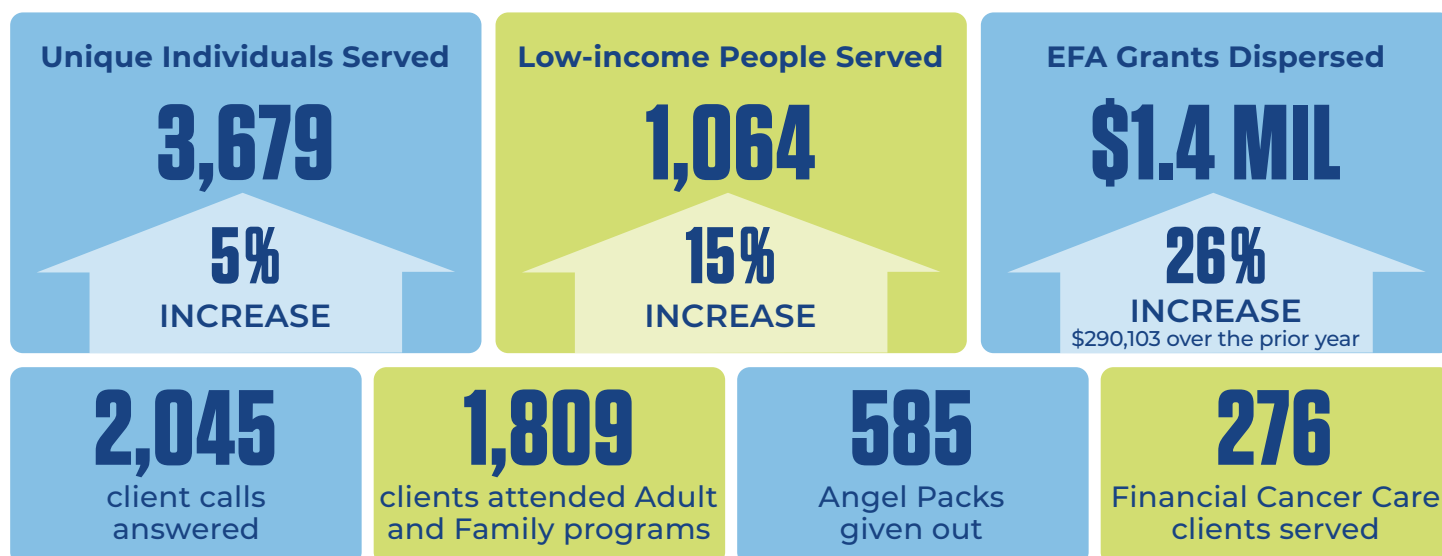


ANGEL FOUNDATION™

2024 EFFECTIVENESS ASSESSMENT METRICS

MISSION DELIVERY



Customer satisfaction score for our services - **98% of patients surveyed would recommend Angel Foundation™ programming to a friend or family member** (surveys from Financial Cancer Care, Emergency Financial Assistance, Adult and Family Programs and Angel Packs™ combined).

DEVELOPMENT

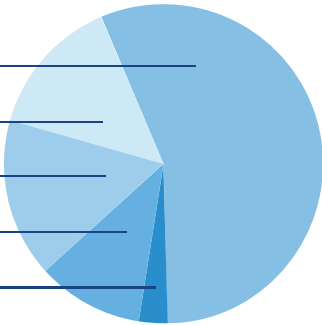
● Number of Donors	2019
● Average Gift Size	\$801.72
● Donor Retention Rate	52.59%

- According to the Fundraising Effectiveness Project, the overall donor retention rate for nonprofits in 2024 is approximately 42.9%, reflecting a 2.6% drop from 2023.

OPERATIONS / FINANCIAL METRICS

Revenue Diversity

Special Events/Third Party Events	\$2,062,358	56%
Individual/Major Donors	\$495,125	14%
Grants	\$588,954	16%
Org/Corporate	\$409,169	11%
In-kind	\$104,754	3%



* It is important to note we get many individual gifts that show up in special event revenue as well as corporate sponsorships.

Budget

GOAL : \$3,591,382

ACTUAL : \$3,660,360

● Cost to Service Ratio

- 81 cents on every dollar is invested in our mission and programs.

81 : 100

● Direct Expense Ratio for Special Events

- Efficient Range: 10% to 25% of funds raised is considered efficient.

\$399,484 : \$2,062,358 = 19%

● Financial Reserves

- Based on expenses in 2024 this would equate to 11 months of reserves.
 - The average across the sector clusters around 4–6 months. The majority have 3 months or less.
- Source: National Council of Nonprofits

2023	2024
\$3,087,683	\$3,469,962
GAIN of \$382,279	

12%
Growth



● Total Assets-Growth Year-Over-Year

- The industry standard for nonprofit growth in 2024 was 1.9%.
- Total charitable donations rose by approximately 1.9% year-over-year. However, when adjusted for inflation, this increase was effectively neutral, indicating that the real value of donations remained flat.

2023	2024
\$4,751,536	\$5,182,618
GAIN of \$431,082	

9%
Growth



WATCHDOG SCORES

● Candid

Platinum Seal

● Charity Review Council

Highest Level of Standard

BOARD OF DIRECTORS

● Board Representation | Ethnic/Racial Diversity

